

EASY LIGHT Power LED

5 Years Warranty

Arredamento Interno - indoor

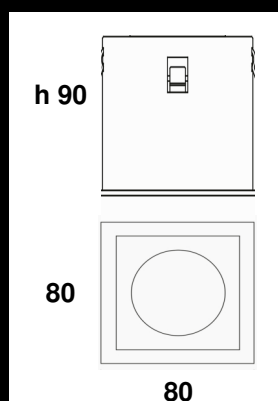
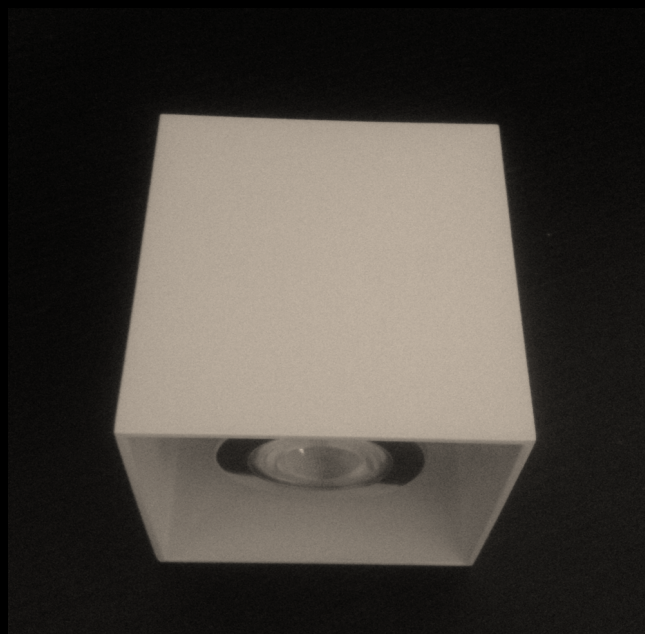
Code/Art. **SQ 7 230Vac** (7W - lm 600)

IP44

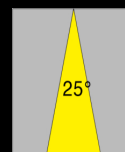
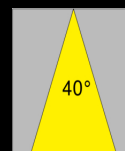
SPOT LED Quadro LED a soffitto
SPOT LED Square LED Downlight

Dimensioni
Dimensions

80 x 80 x h90 mm





Beam



EASY LIGHT Power LED

SPOT LED Quadro LED a soffitto

SPOT LED Square LED downlight

| | | | | | |
|---|--|----------------|---|--|-------------|
| Code/Art. SQ 7 W | | Power Watt : 7 | | NO Driver : 230Vac | |
| LED Module 1 x 7 | | | | | |
| Protection Class : IP44 | EN 60529 | Class |  |  | RoHS |
| Struttura in Alluminio pressofuso : Bianco / Nero / Grigio <i>Aluminium structure : White / Black / Grey</i> | | | | | |
| LED con Struttura dissipante in Alluminio anodizzato <i>LED with Anodized aluminium dissipating structure</i> | | | | | |
| Code/Art. Dimensioni 80 x 80 x h90mm SQ 7 <i>Dimensions 80 x 80 x h90mm</i> | | | | | |
| LED CRI>80 con protezione trasparente resistente ai raggi UV Lente : 40°/25° <i>LED CRI>80 with UV resistant polycarbonate transparent protection Beam : 40°/25°</i> | | | | | |
| Alimentazione 230Vac ON/OFF Direttamente 230Vac NO Driver - NON dimmerabile <i>Power Supply 230Vac ON/OFF Only (NO Driver) No Dimmable</i> | | | | | |
| Possibilità di collegamento elettrico tra più articoli <i>Possibility of electrical connection between more items</i> | | | | | |
| Code / Art. | Kelvin grades / Color Temperature LED | | | Lumen lm | |
| SQ 7 W - 11 40° | ■ Natural White 4000K | | | 600 | |
| SQ 7 W - 12 40° | ■ Warm White 3000K | | | 585 | |

5 Years Warranty - Long Life Power Led

www.ett-led.com

pag.105